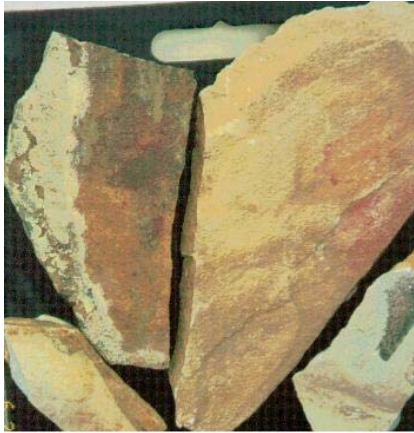
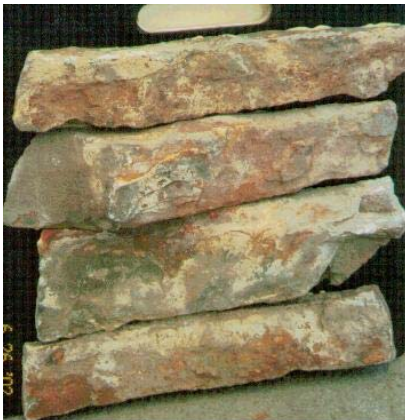


Distributed by:  
Sepulveda Building Materials  
1-800-966-4726  
Fax: (949) 347-2151  
Field Sales Headquarters  
28092 Forbes Road  
Laguna Niguel CA 92677-1288  
[www.sepulveda.com](http://www.sepulveda.com)  
email: [info@sepulveda.com](mailto:info@sepulveda.com)



East Sierra Gold Flagstone



East Sierra Gold Ledge Stone



East Sierra Thin Flagstone

**PRODUCT NAME:**

East Sierra Gold Natural Stone

**QUARRIED BY:**

Lompoc Quarries  
28092 Forbes Road  
Laguna Niguel, CA 92677-1288  
Toll Free: 800-726-2292  
Sales Phone: 949-347-2161  
Sales Fax: 949-347-2151  
Email: [stoneinfo@lompocstone.com](mailto:stoneinfo@lompocstone.com)  
Website: [www.lompocstone.com](http://www.lompocstone.com)

**Quarry Address:**

3135 Santa Rosa Road  
Lompoc CA 93436  
Quarry Phone: 805-735-1181  
Quarry Fax: 805-735-2328

**GEOLOGIC DESIGNATION:**

Sedimentary

**TRADE NAMES:**

East Sierra Gold Flagstone: thin, select  
East Sierra Gold Ledge Stone  
East Sierra Landscape Boulders and slabs

**COLOR RANGE:**

Sunset color range from: dark chocolate to a deep red with shades of yellow and gold in the surface and body.

**APPLICATIONS:**

Residential or commercial applications for paving walkways, patios entries, floors, decks driveways; veneer for interior or exterior walls, columns, fireplace faces, chimneys, barbecues, planters, waterfalls, water features, ponds, swimming or natural pools; capping of walls, seats, stair treads, lamp posts, column cap, pool and spa coping, water-tables, and sills. Boulders may be used as monumental decorations, outdoor tables or as landscape accents.

**TYPES:**

Flagstone: thin or select  
Mosaics, Veneer or Rubble  
Natural Ledge  
Landscape Boulders

**SIZES:**

Flagstones: 1 ¼" minus; select: 1"-2 ¼"  
Natural Ledge: 3"-8" high x 8" – 24" plus long,  
and 3"–6" bed depth  
Boulders: 6" – 6 ft.

**TEXTURES & FINISHES:**

Minimum amount of natural cleft, natural split face, tumbled ledge

**PHYSICAL PROPERTIES:**

Density  
Compressive Strength  
Water Absorption  
Flexural Strength

**COMPLETED PROJECTS:**